

# 660SJ Telescopic Boom Lift



## APPLICATIONS

- Facilities maintenance
- Electricians
- Plumbers
- All maintenance and construction work.
- Factory fit outs before electrical power is connected
- Ideal tilt up panel installation
- Steel building installation
- Steel cladding contractors

# 660SJ Telescopic Boom Lift

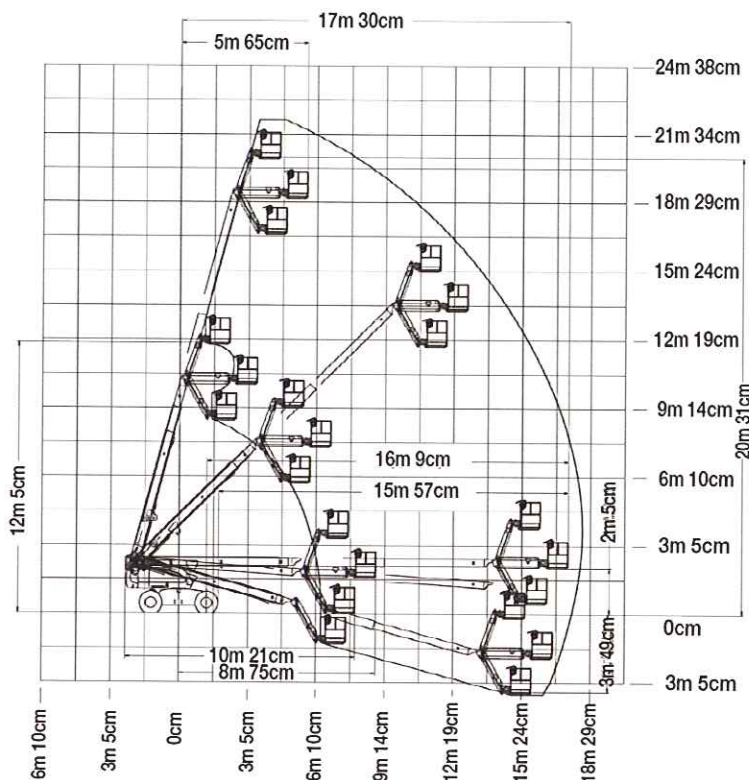


## QUESTIONS TO ASK

- What are the ground conditions in the work area?
- What are the site conditions travelling around the site?
- What is the working height needed for the job?
- What is the outreach required for the job?
- Do you need an extension lead outlet in the platform?
- Will inbuilt Miller 5.5KvA generator make the job easier?

## KEY SELLING POINTS

- Smooth control, proportional hydraulic 4 wheel drive, with two speed ranges
- Proportional lift and swing controls at the platform for fast functionality
- Oscillating front steer axle with the boom within 10 degrees of centre, assists 4 wheel drive traction
- 4 wheel steer
- Jib boom and basket rotate
- Cylinder boots protect cylinder rods from overspray and contaminants
- Lug pattern urethane filled tyres
- Multi axis 4 degree level sensor
- Plug in JLG analyser at platform and base to indicate system functions for servicing and adjustment
- Deutz Engine F4M2011 5DZXL03. High speed, 4 cylinder, liquid (oil cooled), 48.5kW engine pre-glow and post-glow feature reduces emissions.



## SPECIFICATIONS

### Performance:

Platform Height (max.)	20.31m
Working Height	22.31m
Platform Rotation Angle	180°
Jib Raise Angle	70°
Jib Lower Angle	60°
Jib Articulation Range	130°
Maximum Horizontal Outreach	17.3m
Lift Time	46-60 sec
Lower Time	33-43 sec
Platform Capacity	230kg
Slewing Angle	360°
Continuous Slew	Yes

### Dimensions:

Stowed Length	10.21m
Stowed Height	2.56m
Overall Width	2.42m
Wheelbase	2.48m
Ground Clearance	0.30m
Platform Width	2.44m
Platform Length	0.91m
Overall Jib Length	1.83m
Tailswing	1.14m
Axle Oscillation Standard	Std

### Power:

Power Source	Diesel
Engine Make	Deutz
Engine Model	D2011 L04
Engine Power	48kW
DC Voltage	12V
DC Power	1000CCA
Genset	5.5KvA Miller
Auxiliary Power	12V Pump

### Travel:

Tyre Size	15 x 19.5
Tyre Type	Urethane Filled
Inside Turn Radius	1.65m
Outside Turn Radius	3.45m
Drive Speed Elevated	0.8 km/h
Gradeability with 4WD	45%
Drive Speed - 4WD	6.8 km/h
Maximum Ground Bearing Pressure	5.27kg/cm <sup>2</sup>

### Weights and Capabilities:

Fuel Tank Capacity	151.42 Ltr
Hydraulic Tank Capacity	121.13 Ltr
Operating Weight	13,550kg