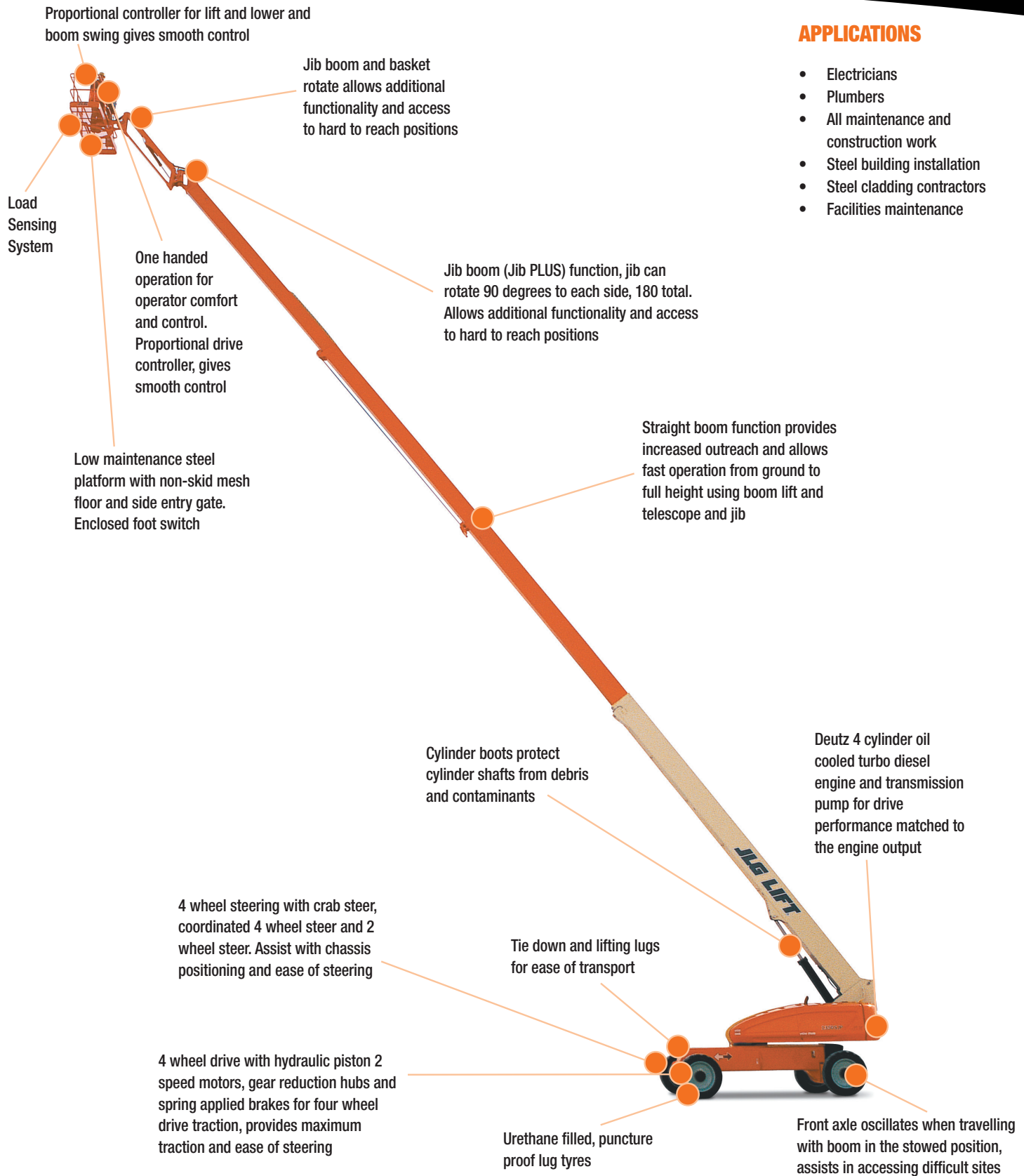


# 1350SJP Telescopic Boom Lift



## APPLICATIONS

- Electricians
- Plumbers
- All maintenance and construction work
- Steel building installation
- Steel cladding contractors
- Facilities maintenance

# 1350SJP Telescopic Boom Lift

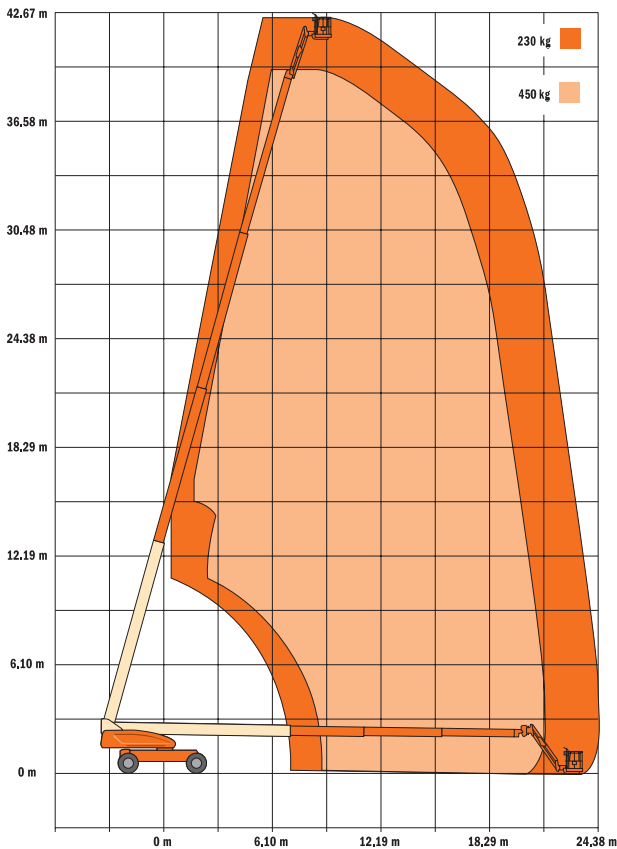


## QUESTIONS TO ASK

- What are the ground conditions in the work area?
- What are the site conditions travelling around the site?
- What is the working height needed for the job?
- What is the outreach required for the job?
- Do you need an extension lead outlet in the platform?
- Will an inbuilt Miller 5.5kVA generator make the job easier?

## KEY SELLING POINTS

- Smooth control, proportional hydraulic 4 wheel drive, with two speed ranges
- Proportional lift and swing controls at the platform for fast functionality
- Oscillating front steer axle with the boom lowered in the travel position, assists 4 wheel drive traction
- Extending axles and 4 wheel steer, and crab steer
- Jib boom and basket rotate
- Jib PLUS feature allows jib rotation each side of centre line
- Cylinder boots protect cylinder rods from overspray and contaminants
- Large lug pattern urethane filled tyres
- Multi axis 5 x 5 degree level sensor
- Plug in JLG analyser at platform and base to indicate system functions for servicing and adjustment
- Deutz Engine TD2011 L04 turbo. High speed, 4 cylinder, liquid (oil cooled) engine with pre-glow and post-glow feature reduces emissions



## SPECIFICATIONS

### Performance:

Platform Height (max.)	41.15m
Working Height	43.3m
Platform Rotation Angle	180°
Jib Plus Rotation Angle	180°
Jib Raise Angle	75°
Jib Lower Angle	55°
Jib Articulation Range	130°
Maximum Horizontal Outreach	24.38m
Platform Capacity	230kg/450kg
Slewing Angle	360° Continuous
Level Sensor	5 x 5

### Dimensions:

Stowed Length	11.86m
Stowed Height	3.05m
Overall Width	2.49m
Overall Width with Extended Axle	3.82m
Wheelbase	3.81m
Ground Clearance	0.30m
Platform Width	2.44m
Platform Length	0.91m
Overall Jib Length	2.44m
Tailswing	1.67m
Axle Oscillation Standard	Std

### Power:

Power Source	Diesel
Engine Make	Deutz
Engine Model	TD2011 L04 Turbo
Engine Power	55kW
DC Voltage	12V
DC Power	1400CCA
Genset	5.5kVA Miller
Auxiliary Power	12V Pump

### Travel:

Tyre Size	445/50 D 710
Tyre Type	Urethane Filled
Inside Turn Radius	4.39/2.44m
Outside Turn Radius	6.86m
Turn Radius with Extended Axle	5.89m
Drive Speed Elevated	0.5km/h
Gradeability with 4WD	45%
Maximum Ground Bearing Pressure	7.52kg/cm <sup>2</sup>

### Weights and Capabilities:

Fuel Tank Capacity	117.35 Ltr
Hydraulic Tank Capacity	208.2 Ltr
Operating Weight	20,400kg